

LANDSCAPE INTERPRETATIONS

EXHIBITION OF WORKS BY - E. BARTHET | A. CAMILLERI | L. BORG

03 | 01 | 2025 - 30 | 01 | 2025



*"A temporary exhibition of artworks by 3
modern artists celebrating 99 years since
the birth of Goerge Fenech."*

The 'Landscape Interpretations' exhibition and booklet is made possible with the support of the family of George Fenech and the George Fenech Museum, whose dedication and passion have brought to life the legacy of artist George Fenech for future generations to appreciate, while also allowing for a space within the museum to host temporary exhibitions.

Our sincere appreciation extends to the families of Antoine Camilleri, Esprit Barthet, and Lino Borg, whose involvement has been essential in making this exhibition a reality. We are also grateful to Charles Calleja and Clint Calleja for their support throughout the process.

Finally, we would like to acknowledge the kind sponsorship of The Master Cellar and Marsovin, whose contribution have made the opening evening of the exhibition more special.

Lino Borg, Antoine Paul Camilleri, Sean Pollacco and Luke Agius Barthet.

GEORGE FENECH

This exhibition commemorates ninety-nine years since the birth of George Fenech (1926-2011), the artist who hailed from Mellieha. It is being held at the "George Fenech Art Museum and Gallery", the former family residence of the Artist for many years.

For this occasion, three Maltese artists have been invited to showcase their work, namely: Esprit Barthet (1919-1999), Antoine Camilleri (1922-2005), and Lino Borg (b. 1951). These three diverse artists have special connections with George Fenech. Barthet and Camilleri were teaching colleagues with Fenech for many years. These three artists were leading modern painters who devoted much of their careers to teaching in local schools in Malta, helping to nurture young, emerging artists. They also exhibited together in numerous prestigious exhibitions. On the other hand, Lino Borg was a student of George Fenech and Esprit Barthet, and was a close friend to the three artists, receiving invaluable advice from them throughout his teaching and artistic careers. The bond between these three artists and George Fenech remains strong and lasting.

To commemorate George Fenech, it seemed fitting to choose LANDSCAPE as the theme for this exhibition. Landscape painting was not only a subject dear to Fenech's heart but also one in which he was remarkably prolific. This theme is embraced by the three participating artists, who each interpret it in its broadest sense, showcasing the distinctive nature and character of each artist's work.

Esprit Barthet focused on the theme of landscape and seascape throughout his entire career, and even when he started to simplify his work into geometric abstraction, one could always distinguish

the cubic sense of Malta's architecture which eventually developed into his rooftops' series. Barthet also made use of trees, boats and church cupolas to imprint a local flair of Maltese traditions. In this exhibition one gets an idea of such works where colour and line are used forcefully and synthetically to bring forth an overall sense of modern simplicity.

Antoine Camilleri loved Malta, its villages, the narrow streets, the bastion walls, the harbour, and he generally inserted farmers and fishermen working in his landscapes and seascapes. His depiction of the Bugibba breakwater, for example, demonstrates his accuracy in capturing the essence and character of the place while working innovatively with clay and paint: even though this area has changed drastically nowadays, the essence and spirit of the place remains. In this exhibition there are also some simple watercolour drawings with notes written by the artist while studying in Corsham, United Kingdom. In his work, whether it is a landscape or any other theme, Antoine Camilleri turned everything biographical, and this aspect may be a revelation to those visitors who come to visit this exhibition and experience Camilleri's work for the first time.

Lino Borg knew George Fenech closely and had the opportunity to collaborate with the artist on several occasions. He shares Fenech's approach to landscape painting and adopts a similar philosophy to paint on location and take the challenge of capturing the spirit and light of Maltese local villages and fields. The paintings in this exhibition, depicting Chadwick Lakes and Siggiewi, convey the silence and remoteness of these places. The delicate pinks and purples used for shadows capture the contrasts of the landscape, as well as the breeze flowing through the branches of the trees. You can almost feel the reeds gently moving in a landscape interpreted through a patchwork of colour strokes, created with a sense of reassurance in his brushwork.

ESPRIT BARTHET

1919-1999

Farmers at Work

Oil on board

33 cm x 47 cm

Signed | Dated 1944

Private Collection



Rooftops with boats

Oil on canvas

44 cm x 66 cm

Signed | Dated 1999

Private Collection



Night rooftops

Mixed media on paper

40 cm x 48 cm

Signed | Dated 1978

Private Collection



Landscape

Oil on paper

15cm x 20 cm

Signed | Dated 1979

Private Collection



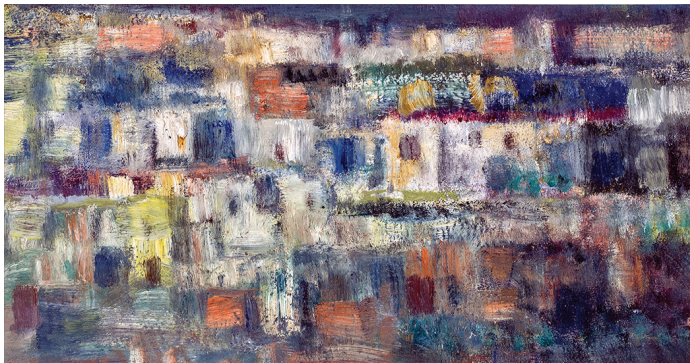
Rooftops

Oil on board

14 cm x 26 cm

Unsigned | Undated

Private Collection



ANTOINE CAMILLERI

1922-2005

Tug Boats II

Pastel on paper

24 cm x 30 cm

Unsigned | c. 1940

Private Collection



Tug Boats I (Harbour)

Pastel on paper

24 cm x 30 cm

Unsigned | c. 1940

Private Collection



Village I

Pen on paper

22 cm x 31 cm

Signed | Undated

Private Collection



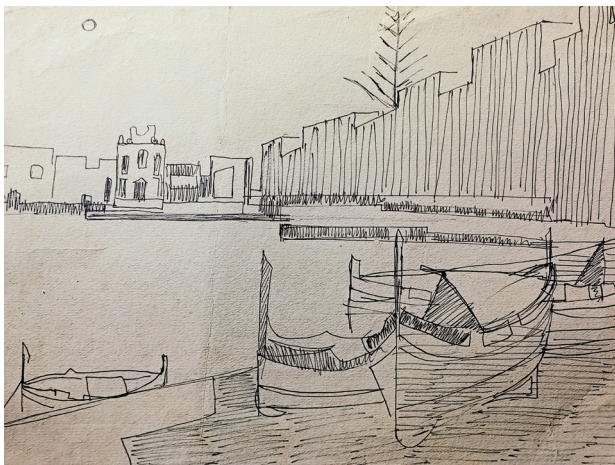
Fishing Village

Pen on paper

25 cm x 31 cm

Signed | c. 1971

Private Collection



St Paul's Bay

Pen on paper

20 cm x 28 cm

Unsigned | Undated

Private Collection



LINO BORG

b. 1951

St Peter's Pool

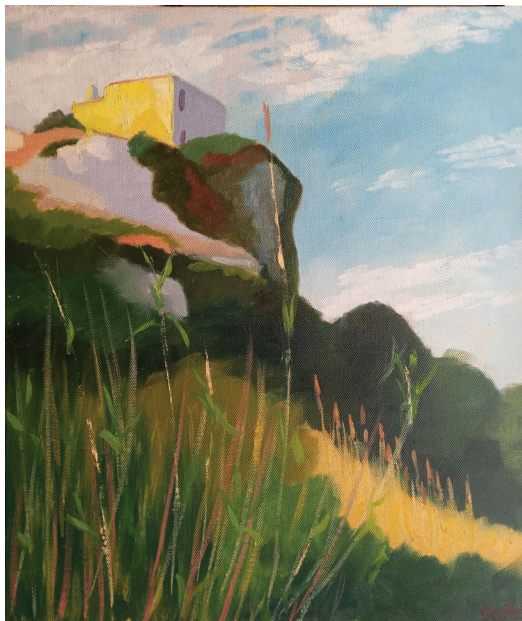
Oil on canvas

40 cm x 50 cm

Signed | Dated 2024

Private Collection





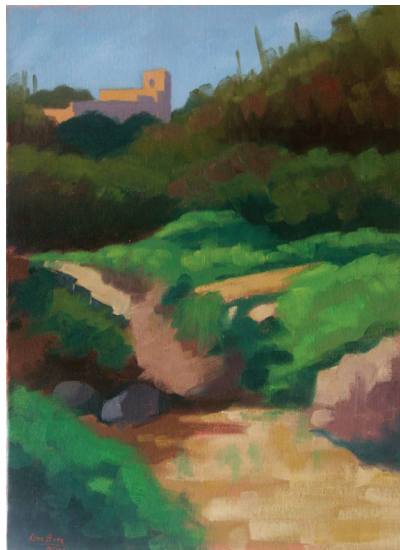
Bingemma

Oil on canvas

50 cm x 40 cm

Signed | Dated 2024

Private Collection



Wied Hesri

Oil on canvas

56 cm x 40 cm

Signed | Dated 2021

Private Collection



Wied II-Kbir I

Oil on canvas

50 cm x 40 cm

Signed | Dated 2020

Private Collection



Wied II-Kbir II

Oil on canvas

60 cm x 40 cm

Signed | Dated 2024

Private Collection



The **George Fenech Art Museum and Gallery**, situated in the heart of Mellieħa, at 42 Triq il-Kbira, and houses an extensive collection of over **130 works of art and archival material by the well-known George Fenech**. The museum occupies the very residence where the artist and his family resided for over three decades.

Three rooms on the upper floor are dedicated to George Fenech's art studio and an array of artworks, offering **a comprehensive journey and evolution through six decades of his creative mind** – ranging from his formative years in Malta and Rome, up to his mature years as an artist.

The museum is managed by the artist's family and is open for public viewing. For further information please go to the **Visiting the Museum** section.

Special thanks to

G. Fenech

GEORGE FENECH
ART MUSEUM & GALLERY

CARAVAGGIO
WINES OF MARSOVIN